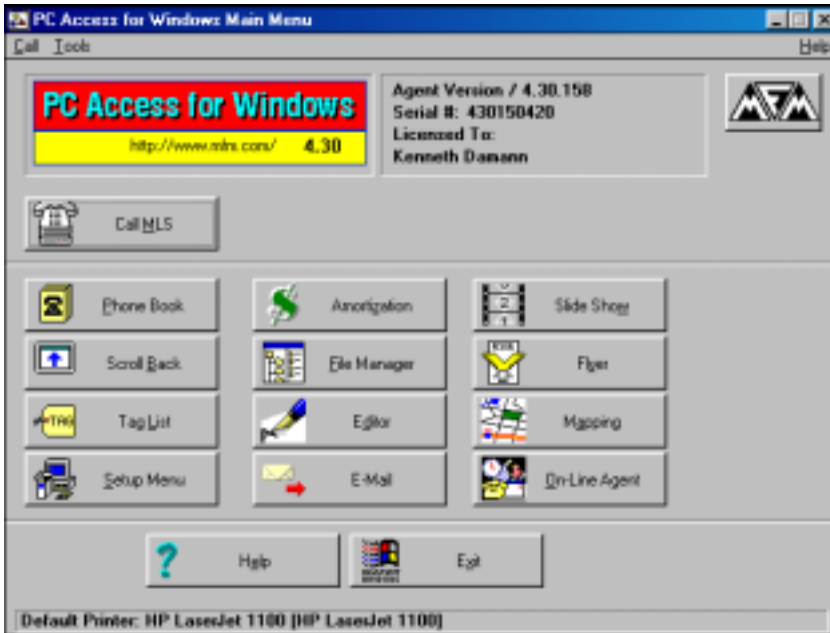


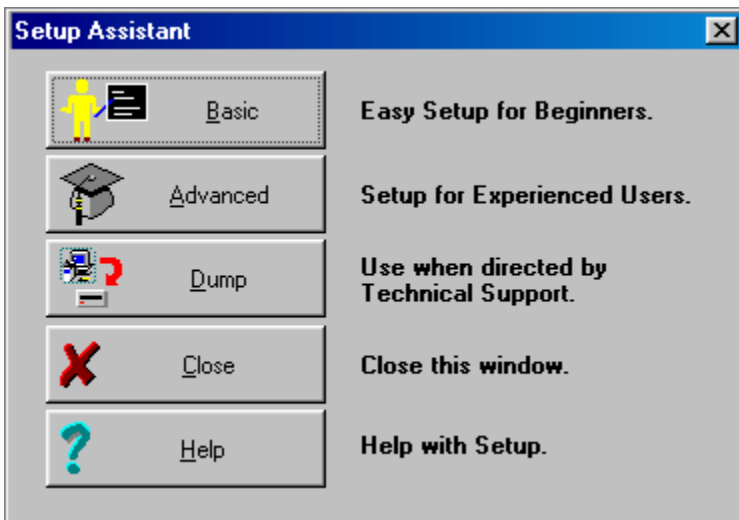
# CHANGING YOUR INTERNET SERVICE PROVIDER SET-UP IN PC ACCESS



**Step 1:** Go to the “PC Access for Windows Main Menu” screen.

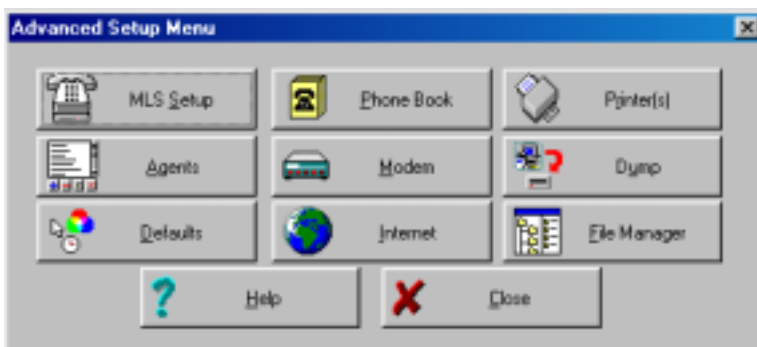
Click on the “Setup Menu” Button in the lower left-hand corner.

This will take you to the “Setup Assistant” Screen.



**Step 2:** On the “Setup Assistant” screen, click on the button labeled “Advanced.”

This will take you to the “Advanced Setup Menu” Screen.



**Step 3:** On the “Advanced Setup Menu” Screen, click on the “Internet” Button.

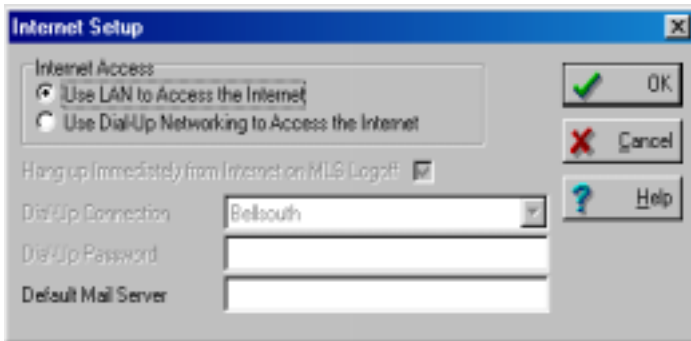
This will take you to the “Internet Setup” Screen.

## AT THIS POINT YOU HAVE AN OPTION:

If you use a DSL, ISDN, T-1 LINE or CABLE MODEM connection select;

*“Use LAN to Access The Internet.”*

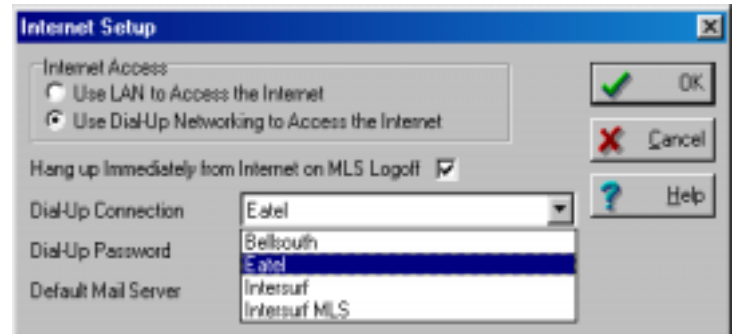
**AOL USERS SHOULD ALSO SELECT THIS OPTION!**



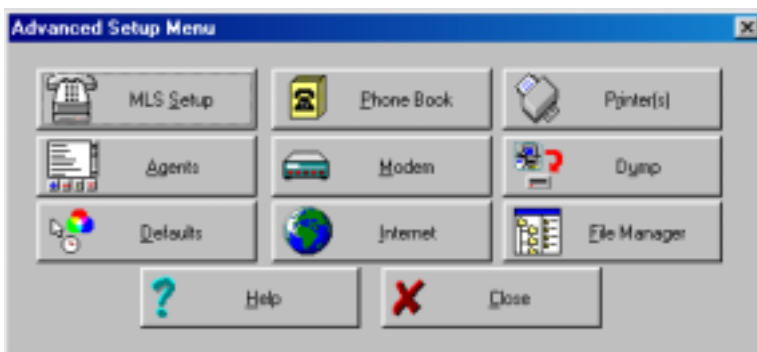
When you are done, Click on the “OK” Button and this will take you back to the “Advanced Setup Menu” screen.

If you use a MODEM to dial out to the Internet through your ISP, then select:

*“Use Dial-up Networking to Access the Internet”* and use the drop-down list next to the box labeled “Dial-Up Connection” to add your ISP’s Dial-up



When you are done, Click on the “OK” Button and this will take you back to the “Advanced Setup Menu” screen.



**Step 4:** On the “Advanced Setup Menu” Screen, Click on the “Close” Button.

This will take you back to the “PCAccess for Windows Main Menu” Screen.

### IMPORTANT NOTE FOR AOL USERS!!!!

If you are connecting to the MLS through an AOL connection, you should set-up your software to the “USE LAN” option above. In order to connect to the MLS using AOL **YOU MUST FIRST OPEN YOUR AOL CONNECTION AND GET ONLINE!** When you hear the man say, “Welcome” Then minimize your AOL window and go into PC Access and hit “Call MLS.”

If you have any questions or problems connecting to the MLS, you may call the Greater Baton Rouge Association of REALTORS® Office at (225) 761-2000 for telephone assistance during business hours